

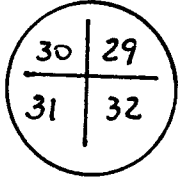
049156

RECEIVED
LARAMIE COUNTY
CHEYENNE, WY.

CERTIFIED LAND CORNER RECORDATION

'88 SEP 22 PM 3 32

T-14-N, R-66-W DESCRIPTION OF CORNER EVIDENCE FOUND, AND ORIGINAL RECORD (If known)

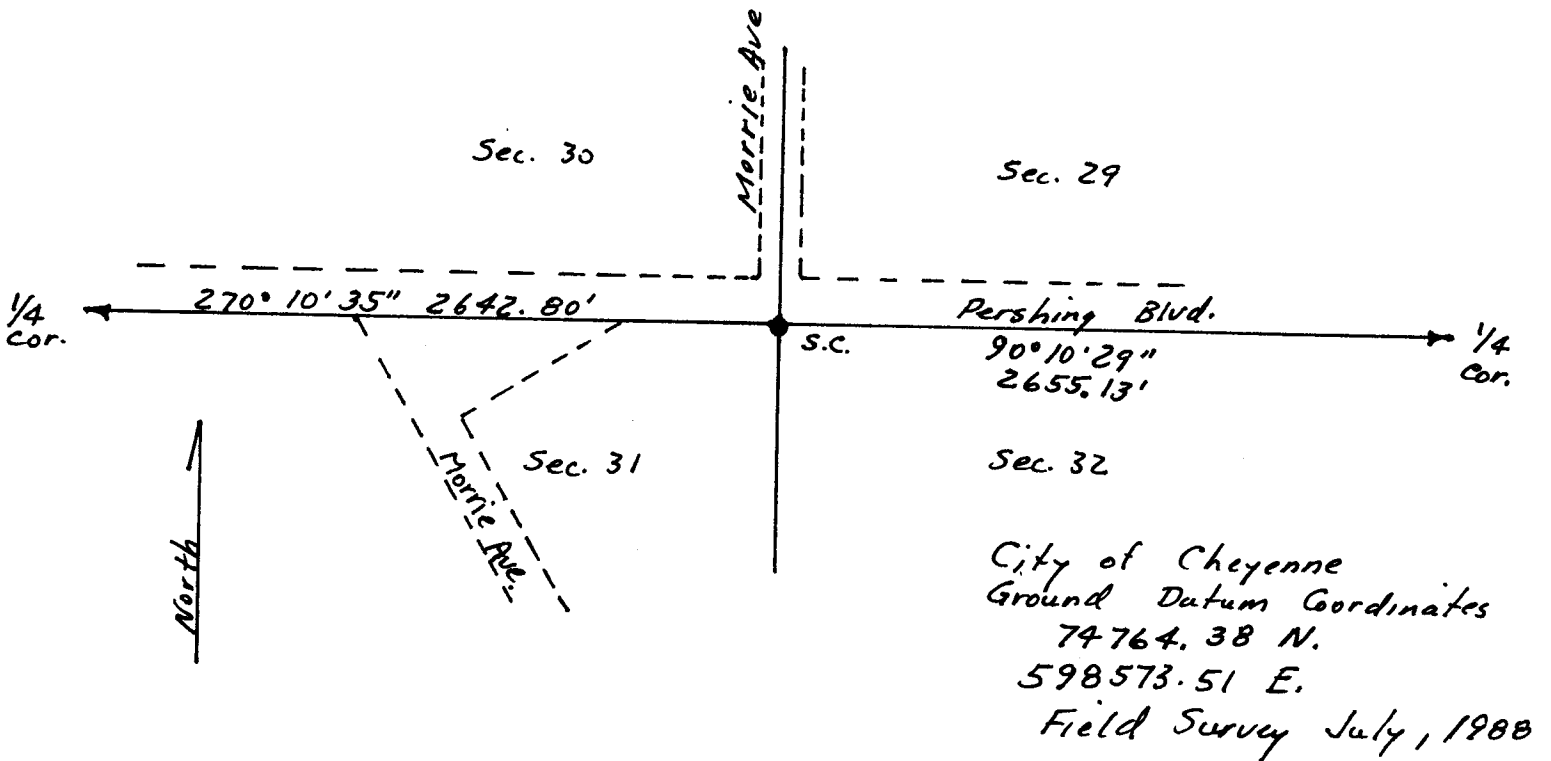


Found a 1" Iron Pipe. G.L.O. Monument described as a 32" x 14" x 8" Red Sandstone.

DESCRIPTION OF MONUMENT AND ACCESSORIES ESTABLISHED TO PERPETUATE THE ORIGINAL LOCATION OF THIS CORNER:

Set a 2" x 24" Galvanized Iron Pipe over the 1" Pipe Found.

SKETCH, WITH COURSE AND DISTANCE TO ADJACENT CORNER IF DETERMINED IN THIS SURVEY. (May Sketch or Paste Reproduction on Reverse Side.)



I, Edward C. Fry certify that I have carefully performed or reviewed the work done on the diagrammed corner as reported on this recordation form and approve the same.

Edward C. Fry
Signature of Surveyor

PE/LS 662
Registration No.

STATE OF WYOMING,
Office of Clerk and Recorder,
County of Laramie

This "corner record" was filed for record on the 22 day of September, 1988, was noted on the cross-index plat and is assigned page No. 623, in book No. 1265.

Janet C. Whitehead
County Official

Cross Index No. _____	T. _____	R. _____	Mer. _____
_____	T. _____	R. _____	Mer. _____
_____	T. _____	R. _____	Mer. _____
_____	T. _____	R. _____	Mer. _____
_____	T. _____	R. _____	Mer. _____
_____	T. _____	R. _____	Mer. _____
_____	T. _____	R. _____	Mer. _____

BOOK 1265 V-5 14-66

623